



Sloop Tavern Yacht Club



www.styc.org

NOTICE OF RACE & Sailing Instructions

Take Your Time Friday's

2019

Casual Racing Fleet

June Series:	6/7, 6/14 6/21, 6/28
July Series:	7/5, 7/12, 7/19, 7/26
August	CYC's Sailfest

STYC is hosting two series of Casual Racing in an effort to provide a more relaxed racing opportunity for cruisers, racers, live-a-boards and dinghies. Skippers will take their own finish time, and submit it to the website for scoring.

1. **Rules:** This race is governed by the current Racing Rules of Sailing except as modified by these Instructions. There will be no protesting, no yelling, and no contact between boats. Boats of a greater sailing ability are required to go out of their way to avoid boats of a lesser ability.
2. **Eligibility and Entry Deadline:** Races are open to all sailboats and sailing dinghies with or without a PHRF rating (no motors can be used while racing). Ratings can be obtained by contacting the STYC handicappers or race organizers listed on the STYC website (www.styc.org). This series is **free**. Please try and enter online prior to the Wednesday before the first race of the series, but boats can enter at any time in the series and can even race and then enter the next day online. Once entered you are now entered for the remainder of the summer's races. Online entry is available at (www.styc.org).
3. **Skippers' Meeting:** There will be no Skippers' Meeting for these series. Skippers are responsible to check for any changes posted on the STYC website (www.styc.org). Any weekly changes will be posted by 1:00PM the Friday of the race.
4. **Divisions and Starting Times:** There will be one start at 19:00. There will be no RC boat, racers are required to start honestly on GPS time. Be sure to turn your GPS on at least five minutes early to acquire the satellites. The GPS time will not be accurate until all of the satellites have been acquired.
5. **Time Limit:** The time limit for this race is 2.5 hours. There are no extensions.
6. **Starting Line:** The start line will be between the N Buoy and a large WHITE rock on the Shilshole Breakwater. The rock is due East (True) from Mark N.

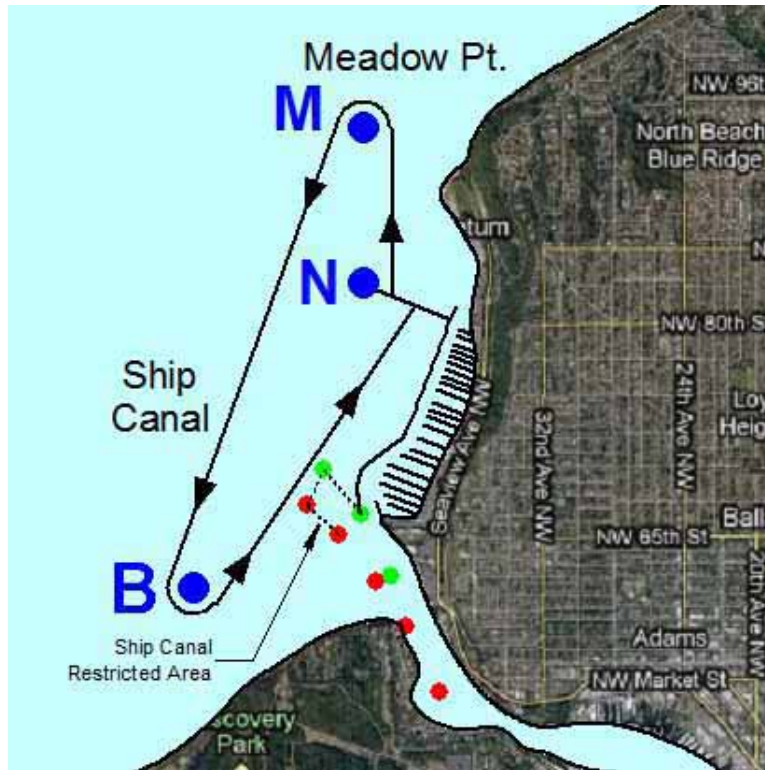
7. **Race Distance and Course:** The race course will be **NMBN**. The course will be indicated by the following mark letters. The first mark is to the North, take all marks to Port. The total course length is 3.203.

N Round metal ball with flag, located near the North end of the breakwater (47° 41.064, 122° 24.679)

M Meadow Point Buoy (47°41.783, 122° 24.583)

B Ballard Sails Buoy (47°40.238, 122° 25.367)

MARK LOCATIONS



Ship Canal Restricted Area: Sailboats may not sail inside the Ship Canal Restricted Area, as defined by the following three lines:

- From the south end of the Shilshole breakwater NW to buoy C "1" (Green Can #1).
- From buoy C "1" SW to buoy N "2" (Red Nun #2).
- From buoy N "2" SE to buoy N "4".

These are the buoys that mark the entrance to the ship canal. Sailboats are advised to exercise caution when sailing near the entrance to the Ship Canal due to heavy traffic and shallow depths in areas immediately SW of the entrance buoys.

- Finish time:** Each boat will **Take-Your-Time** and submit it to the website before Noon on the Monday following the race. You must use GPS time when recording your finish time.
- Race Scoring:** These races will be scored with the Time-On-Distance scoring method.
- Series Scoring:** The series will be scored as follows:
 - 1st place will receive 1 point, 2nd will receive 2 points, 3rd 3 points, etc.
 - Points for all races in the series will be added together, and the lowest points win.
 - Your place in your worst race will be thrown out if there are four or more races.
 - Ties will be resolved using Appendix A of the Racing Rules of Sailing.
 - DNS and DNF will be scored as one plus the number of boats finishing each race.
- Race Results:** Race results will be shown on the website as soon as possible after the deadline for submitting your finish time.
- After Race Parties:** Meet at the Sloop Tavern afterwards to brag and chat.